



Kobe City
University of Foreign Studies

Japanese Language Program

FALL 2023
▼
SPRING 2024



1. Kobe City University of Foreign Studies (KCUPS)



Founded in 1946, KCUPS offers undergraduate and graduate-degree programs in English, Russian, Chinese and Spanish studies, as well as International Relations. The undergraduate programs offer courses mainly in the following fields: Linguistics and Literature, General Culture, Social Sciences and International Communication. Our graduate school offer masters and doctoral degree programs in linguistic, cultural and social studies as well as double degree program with renowned overseas universities.

2. Curriculum

Exchange students coming to KCUPS from overseas partner universities are enrolled into our Japanese Language Program (JLP). This program aims to improve students' Japanese language skills as well as deepening their understanding of Japanese culture. The study periods available for students are one semester or two semesters (1 academic year), starting either in Fall 2023 or Spring 2024.

International students can also take regular university courses offered to KCUPS undergraduates. The available courses cover fields such as Languages, Linguistics, Literature, Culture, History, Law, Commerce, Economy, Education, and Psychology. JLP students who are in graduate programs at their home universities are allowed to take graduate course subjects at KCUPS.



2-1. Japanese Language Program

The program consists of **Japanese language classes** (Speaking, Listening, Reading, Writing, Grammar, and Business Japanese), **Kanji(Chinese characters) class**, **Japanese Affairs** and **fieldtrips** to sites of cultural and historical importance. All classes are mainly offered in Japanese language. Instructors are committed to creating a positive and supportive learning environment in which students can realize their full potential.

The program offers 4 levels; **Upper Elementary level**, **Lower Intermediate level**, **Upper Intermediate level**, and **Advanced level**. All students are required to take a placement test after arrival and are divided into groups based on their Japanese proficiency.

※Based on the situation of the spread of the COVID-19 in the local and regional area, prevention measures such as switching in-class courses to an online-only format and/or the cancellation of field trips and events may be taken at any given time.

Upper Elementary Course

-For the students who have completed over 150 learning hours of Japanese.
-Targeted level: equivalent to the JLPT N4-N3.

In this course, students aim to:

- ▶ Learn upper-elementary or pre-intermediate vocabulary and grammatical expressions.
- ▶ Communicate properly using frequently used expressions in daily-life situations.
- ▶ Understand Japanese passages on familiar daily topics.
- ▶ Write on familiar topics using basic vocabulary and sentence patterns.

Lower Intermediate Course

-For the students who have completed over 300 learning hours of Japanese.
- Targeted level: equivalent to the JLPT N3-N2.

In this course, students aim to:

- ▶ Reinforce previously learned Japanese knowledge while learning intermediate vocabulary and grammatical expressions.
- ▶ Communicate fluently in familiar situations and convey their opinions properly.
- ▶ Understand the main points and structures of relatively complex texts.
- ▶ Write logically and objectively on topics such as their experiences and familiar social themes.

Upper Intermediate Course

-For the students who have completed over 500 learning hours of Japanese.
-Targeted level: equivalent to the JLPT N2.

In this course, students aim to:

- ▶ Learn upper-intermediate vocabulary and grammatical expressions.
- ▶ Communicate with a degree of fluency and spontaneity, being able to state their opinions logically.
- ▶ Understand relatively long and complex texts on both concrete and abstract topics.
- ▶ Write various texts logically and coherently on a wide range of topics.

Advanced Course

-For the students who have completed over 800 learning hours of Japanese.
-Targeted level: equivalent to the JLPT N1.

In this course, students aim to:

- ▶ Learn advanced vocabulary and grammatical expressions.
- ▶ Communicate spontaneously, very fluently and precisely, even in complex situations.
- ▶ Understand a wide range of intricate, longer texts, and be able to recognize implicit meanings.
- ▶ Write clear, smoothly flowing, detailed texts on complex subjects using an effective and logical structure.

3. Academic Calendar

The schedule is subject to change. Please check our website for updates.

Fall 2023(Sept.-Feb.)

- Accommodation Move-in Date (Sept. 6)
- Post-arrival Orientation (Sept. 7)
- Placement Test (Sept. 8)
- Opening Ceremony (Sept. 11)
- Individual Counseling (Sept. 12, 13)
- Classes start (Sept. 15)
- Winter Break (Dec. 23-Jan. 8)
- Closing Ceremony (Jan. 29)
- Spring Vacation

* Exams of regular course subjects will be finished by February 5 in the fall semester.



Spring 2024(Mar.-Aug.)

- Accommodation Move-in Date (Late March)
- Post-arrival Orientation (Late March)
- Placement Test, Opening Ceremony (Early April)
- Individual Counseling (Early April)
- Classes start (Mid-April)
- Closing Ceremony (Late July-Early August)
- Summer Vacation (August-September)

* The regular course subjects' exam period for the Spring Semester will be finished by the second week of August.

* Details for the Spring 2024 will be published on our website in August, 2023.



4. Student life

Student Support

International Office/JLP Instructors

The International Office is open from Monday to Friday and all staff is readily available to support you in English. The students are welcome to come in at any time and talk to the staff for any requests or concerns during their student life at KCUFS. Also, students are welcome to consult their instructors on their Japanese studies outside class hours as well.



JLP Partners

JLP partners are KCUFS students who provide personal support and friendship to JLP students helping them successfully adjust to the new culture and environment of Japan. 2-3 KCUFS students are paired with each JLP student. JLP partners contact the newcomer JLP students before they arrive to Japan, helping them with all the necessary information and answering their questions and concerns about their arrival.



GAIDAI CHAT

GAIDAI Chat is a student activity where international students can enjoy a friendly and relaxed conversation with a group of KCUFS students in their native language. This is a great opportunity for the JLP students to introduce their country and culture as well as making many KCUFS friends!

Club Activities

KCUFS has a wide range of club activities including sports, culture, language, music, and volunteering. Join a club and take up a new hobby while having fun with KCUFS students!

Karate / Japanese Archery / Kendo / Tennis / Soccer / Baseball / Swimming / Dance / Basketball / Badminton / Volleyball / Rugby / Lacrosse / Tea Ceremony / Choir / Folk Music / Flamenco etc

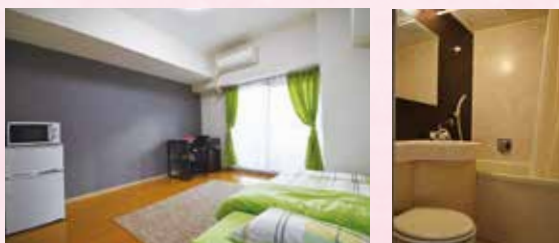


Accommodation

KCUFS will provide furnished individual accommodations for each exchange student and give them all the necessary information on their housing before they arrive to Japan.

Manabigaoka College Heights

- Apartment size: 25 m²
- 6 minutes by bus (2.2 km from KCUFS)



Gakuen-Nishi College Heights

- Apartment size: 18 m²
- Approx. a 15 minute on foot (1.2 km from KCUFS)



5. Student Voices



LEVCHENKO Daria
(Kuban State University, Russia)

Experience that I got at KCUFS would probably be one of the highlights of my life. I learned a lot from it, both in academic and life.

The structure of the lessons is great and each teacher has their unique style of teaching. I was hoping to improve my Japanese skills during the program, and I've definitely achieved that - thanks to great teaching, my Japanese became at least one level higher.

The schedule gives you enough free time to experience the life in Japan in its full glory. And KCUFS helps in this endeavour as well, giving you an opportunity to participate in various event - from meditation to excursion to Awaji-shima.

When I had any hardship, teachers, my JLP-partners, International Office and even other students were ready to help me. Everyone was very kind and I got myself immeasurable amount of friends after this program.

I loved Japan even before that, but after the program this feeling increased tenfold! I'm grateful for a chance to study at KCUFS and would definitely recommend this program to anyone who wants to get to know Japan in a deeper level.

I only got to spend half a year at KCUFS in person, but what an experience it was! The teachers are wonderfully friendly, the JLP staff are supportive and approachable, and the campus is very welcoming. If you're serious about improving your Japanese skills, then the JLP is definitely an opportunity you should take with both hands, because you have plenty of classes, all suited to your skill level. On the off chance you aren't already taking the trains to go sightseeing in Kobe, Osaka, Kyoto, Nara or Himeji with your new friends on your days off, the JLP staff have some great day-trips and events lined up for the students, so there's always something to look forward to. If you have the full year, make the most of it! I've never been made to feel as welcome anywhere as I was in the time I spent at KCUFS, and I'm glad I stuck it out during travel restrictions to get there.



HEMMINGS Jack David
(York St John University, UK)



BROUKA Vasilina
(Belarusian State University, Belarus)

It's been an amazing year. Due to the COVID-19 and other circumstances, most of the time I studied online from my country, but it doesn't matter. The teachers are very kind and explain the material perfectly. Every day you learn something new not only about the language, but also about the culture. And the most amazing thing is the master classes and special lectures. Therefore, even during online classes, I did not feel that I was losing or omitting something in studying.

JLP partners are super nice too- They are very kind, and help not only with all the formalities, but also help you to get used to Japan at all and become your friends.

Thanks to this year at KCUFS, I was not only able to improve my Japanese, but also deepened my knowledge of Japanese culture. And most importantly, it helped me to make personal growth over myself.

Thanks you so much!

After the initial online course and the flight cancellation, I was finally lucky enough to come here. During this year, I'm very glad that I have made great progress in Japanese. Traveling with my friends every week allowed me to experience Japanese society and culture in a way that I don't think I could have while studying in China. I also met JLP students from all over the world. We could communicate with each other through Japanese which made me feel great and fulfilled. In a word, I'm so grateful to my university here and all my teachers and friends. It's been so great to meet so many wonderful people and make some lifelong memories.



GUO Hangshuo
(Beijing Language and Culture University, China)

6. Kobe City

Blessed with a beautiful nature landscape of mountains and sea, Kobe is a very popular city to live in Japan. It has a population of 1.5 million and is the 7th largest city in Japan. Having established itself historically as a trading port, Kobe has a vibrant culture which flourished thanks to a diverse population of foreign residents and their communities. Located in the both historic and cosmopolitan Kansai area, Kobe is an ideal hub to enjoy a day trip to Japan's old capitals Kyoto and Nara as well as Osaka or other famous cities. All these places are just a short train ride away. Please access the page below for some more beautiful sights of Kobe: <http://feel-kobe.jp/en/>



7. Application Procedures

	Fall Semester 2023	Spring Semester 2024
Nomination Deadline	March 1, 2023	August 31, 2023
Submission of Application Deadlines	April 15, 2023 17 hours (Japan Standard Time)	October 15, 2023 17 hours (Japan Standard Time)
Acceptance Notification	the end of May, 2023	the end of November, 2023
Arrival to Japan	September, 2023	March, 2024

*Application information available at:
http://www.kobe-cufs.ac.jp/english/international_students/study_at_kcufs/jlp/index.html

7-1. Eligible Students

- Exchange students (tuition waived) / Fee-paying students (tuition: 267,900JPY/semester) from partner universities.
- Students who have a Japanese language competence equivalent to the JLPT level N4 or above. (Upper Elementary to Advanced levels)
- Students who have an English language proficiency of CEFR B1, IELTS 4.5, TOEFL iBT 60 or equivalent.

[Notes]

- * Students must be enrolled in undergraduate/graduate courses at the time of applying for and finishing the JLP program.
- * Reapplications to this program will not be accepted.
- * There is no lower elementary level course (corresponding approximately to the JLPT N5 level).

7-2. Scholarships

Students from partner universities might be eligible for **scholarships**.

7-4. Contact Us

International Office

Kobe City University of Foreign Studies

Address: 9-1, Gakuen-higashi-machi, Nishi-ku, Kobe, Hyogo
 651-2187, JAPAN

TEL: +81-78-794-8171

FAX: +81-78-794-8178

Email: JLP@office.kobe-cufs.ac.jp

Website: <http://www.kobe-cufs.ac.jp/english/>

7-3. Access

