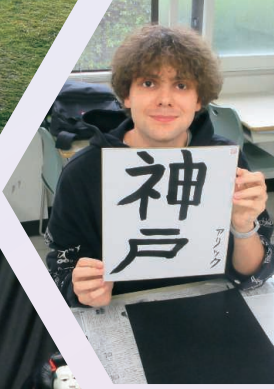




Kobe City  
University of Foreign Studies

# Japanese Language Program

FALL 2026  
▼  
SPRING 2027



# 1. Kobe City University of Foreign Studies (KCUFS)



Founded in 1946, KCUFS offers undergraduate and graduate-degree programs in English, Russian, Chinese and Spanish studies, as well as International Relations. The undergraduate programs offer courses mainly in the following fields: Linguistics and Literature, General Culture, Social Sciences and International Communication. Our graduate school offers masters and doctoral degree programs in linguistic, cultural and social studies as well as double degree program with renowned overseas universities.

## 2. Curriculum

Exchange students coming to KCUFS from overseas partner universities are enrolled into our Japanese Language Program (JLP). This program aims to improve students' Japanese language skills as well as deepening their understanding of Japanese culture. The study periods available for students are one semester or two semesters (1 academic year), starting either in Fall 2026 or Spring 2027.

International students can also take regular university courses offered to KCUFS undergraduates. The available courses cover fields such as Languages, Linguistics, Literature, Culture, History, Law, Commerce, Economy, Education, and Psychology. JLP students who are in graduate programs at their home universities are allowed to take graduate course subjects at KCUFS.



### Japanese Language Program

The program consists of **Japanese language classes** (Speaking, Listening, Reading, Writing, Grammar and Business Japanese), **Kanji(Chinese characters) class**, **Japanese Affairs** and **fieldtrips** to sites of cultural and historical importance. All classes are mainly offered in Japanese language. Instructors are committed to creating a positive and supportive learning environment in which students can realize their full potential.

The program offers 4 levels; **Upper Elementary level**, **Lower Intermediate level**, **Upper Intermediate level**, and **Advanced level**. All students are required to take a placement test after arrival and are divided into groups based on their Japanese proficiency.

#### Upper Elementary Course

-For the students who have completed over 150 learning hours of Japanese.  
-Targeted level: equivalent to the JLPT N4-N3.

In this course, students aim to:

- ▶ Learn upper-elementary or pre-intermediate vocabulary and grammatical expressions.
- ▶ Communicate properly using frequently used expressions in daily-life situations.
- ▶ Understand Japanese passages on familiar daily topics.
- ▶ Write on familiar topics using basic vocabulary and sentence patterns.

#### Lower Intermediate Course

-For the students who have completed over 300 learning hours of Japanese.  
- Targeted level: equivalent to the JLPT N3-N2.

In this course, students aim to:

- ▶ Reinforce previously learned Japanese knowledge while learning intermediate vocabulary and grammatical expressions.
- ▶ Communicate fluently in familiar situations and convey their opinions properly.
- ▶ Understand the main points and structures of relatively complex texts.
- ▶ Write logically and objectively on topics such as their experiences and familiar social themes.

#### Upper Intermediate Course

-For the students who have completed over 500 learning hours of Japanese.  
-Targeted level: equivalent to the JLPT N2.

In this course, students aim to:

- ▶ Learn upper-intermediate vocabulary and grammatical expressions.
- ▶ Communicate with a degree of fluency and spontaneity, being able to state their opinions logically.
- ▶ Understand relatively long and complex texts on both concrete and abstract topics.
- ▶ Write various texts logically and coherently on a wide range of topics.

#### Advanced Course

-For the students who have completed over 800 learning hours of Japanese.  
-Targeted level: equivalent to the JLPT N1.

In this course, students aim to:

- ▶ Learn advanced vocabulary and grammatical expressions.
- ▶ Communicate spontaneously, very fluently and precisely, even in complex situations.
- ▶ Understand a wide range of intricate, longer texts, and be able to recognize implicit meanings.
- ▶ Write clear, smoothly flowing, detailed texts on complex subjects using an effective and logical structure.

# 3. Academic Calendar

The schedule is subject to change. Please check our website for updates.

## Fall 2026 (Sept. - Feb.)

- Accommodation Move-in Date (Sept. 3)
- Post-arrival Orientation (Sept. 4)
- Placement Test (Sept. 7)
- Opening Ceremony (Sept. 9)
- Individual Counseling (Sept. 10, 11)
- Classes start (Sept. 25)
- Winter Break (Dec. 26-Jan. 17)
- Closing Ceremony (Feb. 4)
- Spring Vacation

\*Exams of regular course subjects will be finished by February 9 in the fall semester.



Opening Ceremony

Making traditional Japanese sweets



Field Trip to Awaji



Field Trip to Tottori



Tea Ceremony



## Spring 2027 (Mar. - Aug.)

- Accommodation Move-in Date (Late March)
- Post-arrival Orientation (Late March)
- Placement Test, Opening Ceremony (Early April)
- Individual Counseling (Early April)
- Classes start (Mid-April)
- Closing Ceremony (Late July-Early August)
- Summer Vacation (August-September)

\* The regular course subjects' exam period for the Spring Semester will be finished by the second week of August.  
 \* Details for the Spring 2027 will be published on our website in August, 2026.



Flower arrangement and Vegetarian lunch



# 4. Student life

## Student Support

### International Office/JLP Instructors

The International Office is open from Monday to Friday and all staff is readily available to support you in English. The students are welcome to come in at any time and talk to the staff for any requests or concerns during their student life at KCUFS. Also, students are welcome to consult their instructors on their Japanese studies outside class hours as well.



### JLP Partners

JLP partners are KCUFS students who provide personal support and friendship to JLP students helping them successfully adjust to the new culture and environment of Japan. 2-3 KCUFS students are paired with each JLP student. JLP partners contact the newcomer JLP students before they arrive to Japan, helping them with all the necessary information and answering their questions and concerns about their arrival.



## GAIDAI Chat

GAIDAI Chat is a student activity where international students can enjoy a friendly and relaxed conversation with a group of KCUFS students in their native language. This is a great opportunity for the JLP students to introduce their country and culture as well as making many KCUFS friends!

## Club Activities

KCUFS has a wide range of club activities including sports, culture, language, music, and volunteering. Join a club and take up a new hobby while having fun with KCUFS students!

Karate / Japanese Archery / Kendo / Tennis / Soccer / Baseball / Swimming / Dance / Basketball / Badminton / Volleyball / Rugby / Lacrosse / Tea Ceremony / Choir / Folk Music / Flamenco etc.



## Accommodation

KCUFS will provide furnished individual accommodations for each exchange student and give them all the necessary information on their housing before they arrive to Japan.

(Accommodation cost : 300,000 JPY per semester and 60,000 JPY initial fee)

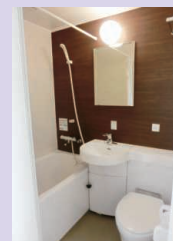
### Manabigaoka College Heights

- Apartment size: 25 m<sup>2</sup>
- 6 minutes by bus (2.2 km from KCUFS)



### Gakuen-Nishi College Heights

- Apartment size: 18 m<sup>2</sup>
- Approx. a 15 minute on foot (1.2 km from KCUFS)



## 5. Student Voices



**GENOVA Krasimira Milenova**  
(Sofia University "St. Kliment Ohridski", Bulgaria)



I had a wonderful time in Japan during my exchange at KCUFS. I really liked the fact that many of the Japanese students were willing to talk with us and enjoy our free time together. They were always there to help us either with daily life issues or university tasks. I highly appreciate the efforts of all the university staff to organize numerous events where we could make friends among both Japanese and international students.

When it comes to education, the materials for all the classes are prepared with a lot of consideration and the teachers are so dedicated to helping everyone improve their language skills as much as possible. What is more, they use a wide variety of teaching methods and encourage you to share your opinion and constructive feedback in order to

make everything even better.

I would definitely recommend the Japanese Language Program of KCUFS to all students who want to spend a productive and joyful year in Japan.



**HUND Pascal**  
(University of Duisburg Essen, Germany)

Choosing Kobe was one of the best decisions I have ever made. Kobe truly has everything you could wish for. Kobe has plenty of green nature surrounding the city, while also offering everything you need for daily life and going out within easy reach. Thanks to its central location, it is also very convenient to travel from Kobe to all corners of Japan.

The university itself is also really good. It may not be the biggest, but I actually see this as an advantage: you quickly get to know both the international and Japanese students, and there are several very friendly and skilled teachers who are always ready to give you a helping hand. Besides the well organized class structure, which ensures that you can study at the level that fits your current language ability in each section, there is also an excellent course on Japanese culture in practice.

Moreover, there are many different clubs and circles you can join as a perfect opportunity to further connect with Japanese students, or simply to relax and have fun.



**RICO NEVADO Claudia**  
(University of Zaragoza, Spain)



If you're looking for the perfect mix of city life and nature, Kobe is the place for you! It's often underrated, but honestly, it's such a beautiful and comfortable city to live in, with something for everyone. KCUFS really reflects that spirit.

I still remember my first day. I was excited but also nervous about all the unknowns. But I warmed up to the place before I even noticed. It didn't take long to realize this university was the right choice. The teachers and staff are really kind and attentive, always taking their work seriously and doing their best to help. You can really count on them if you ever run into problems during your stay.

Of course, no experience is perfect. Nothing in life ever is. But I can assure you this one offers more than just the chance to improve your Japanese or learn about the culture around you. It's also an experience of self-growth. I now carry with me lifelong friends, meaningful personal development, and better tools to face the challenges of adult life.

I'm deeply grateful for this experience. Make the most of your time here."



**MORGAN Quinn Mei-lynn**  
(Eastern Washington University, USA)

I am so grateful for the chance to become an exchange student for the JLP at KCUFS. I was able to learn not just about Japanese culture, but about the cultures of my JLP classmates as well. At KCUFS, you have the chance to join many different types of clubs or circles, with opportunities to volunteer, such as Gaidai chat; places where you can become friends with Japanese students. The classes are intensive, but the teachers are very supportive. Even in just a month, I was able to rapidly increase my Japanese skills. With the help of Japanese friends and JLP senpai's, life in Japan can be easy and fun. KCUFS is in the perfect location. It's in a quiet part of Kobe, but you still can conveniently travel to various places, like Sannomiya, a lively, but not too crowded city; and with just an hour's train ride, you can travel to Himeji, or Osaka. I'll always cherish the memories and friendships I've made as a JLP student. Anybody who wants to improve their Japanese and experience Japanese culture, I 100% recommend going to KCUFS.



## 6. Kobe City

Blessed with a beautiful nature landscape of mountains and sea, Kobe is a very popular city to live in Japan. It has a population of 1.5 million and is the 7th largest city in Japan. Having established itself historically as a trading port, Kobe has a vibrant culture which flourished thanks to a diverse population of foreign residents and their communities. Located in the both historic and cosmopolitan Kansai area, Kobe is an ideal hub to enjoy a day trip to Japan's old capitals Kyoto and Nara as well as Osaka or other famous cities. All these places are just a short train ride away.

Please access the page below for some more beautiful sights of Kobe: <http://feel-kobe.jp/en/>



## 7. Application Procedures

	Fall Semester 2026	Spring Semester 2027
Nomination Deadline	March 1, 2026	August 31, 2026
Deadline for Submission of Applications	April 15, 2026	October 15, 2026
Acceptance Notification	the end of May, 2026	the end of November, 2026
Arrival in Japan	September, 2026	March, 2027

\*Application information available at:

[https://www.kobe-cufs.ac.jp/english/international\\_students/study\\_at\\_kcufs/jlp/index.html](https://www.kobe-cufs.ac.jp/english/international_students/study_at_kcufs/jlp/index.html)



### 7-1. Eligible Students

- Exchange students from partner universities.
- Students who have a Japanese language competence equivalent to the JLPT level N4 or above. (Upper Elementary to Advanced levels)
- Students who have an English language proficiency of CEFR B1, IELTS 4.5, TOEFL iBT 60 or equivalent.

#### [Notes]

- \* Students must be enrolled in undergraduate/graduate courses at the time of applying for and finishing the JLP program.
- \* Reapplications to this program will not be accepted.
- \* There is no lower elementary level course (corresponding approximately to the JLPT N5 level).

### 7-3. Contact Us

#### International Office

#### Kobe City University of Foreign Studies

Address: 9-1, Gakuen-higashi-machi, Nishi-ku, Kobe  
651-2187, JAPAN

TEL: +81-78-794-8171

FAX: +81-78-794-8178

Email: [JLP@office.kobe-cufs.ac.jp](mailto:JLP@office.kobe-cufs.ac.jp)

Website: <https://www.kobe-cufs.ac.jp/english/>



### 7-2. Access

